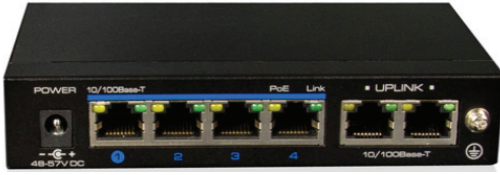


# HAP-SW04

4 Port PoE Ethernet Switch



## Key Features

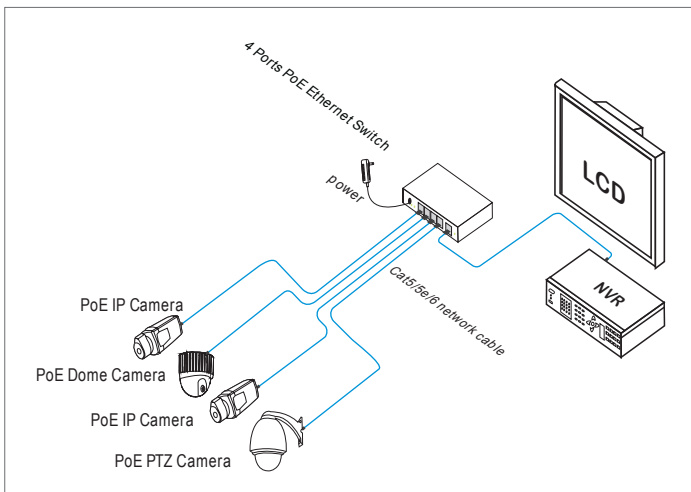
- One 100Mbps uplink ethernet port, four 100Mbps downlink ethernet ports
- All ports supports MDI/MDIX
- Meet IEEE802.3, IEEE802.3u, IEEE802.3af/at standards
- Excellent anti-thunder, anti-static and anti-interference ability
- Kensington Lock for anti-theft
- Support CCTV module that achieve VLAN, QoS priority for protect information security, prevent the viral transmission and ethernet attack

## Technical Specifications

Model	HAP-SW04
<b>Power</b>	
Power Supply	Power Adaptor
Voltage Range	48 ~ 57VDC
Consumption	<5W, PoE output<60W
<b>Ethernet</b>	
Ethernet Port	4 Ethernet Port : 10/100Mbps, 2 Uplink Port : 10/100Mbps
Transmission Distance	Maximum 100m
<b>Network Switch</b>	
Ethernet Standard	IEEE802.3/802.3u/802.3x/802.1p/802.1q, IEEE802.3af/at
Backplane Bandwidth	1.25G
Packet Forwarding Rate	0.74Mbps
Packet Buffer	768k
MAC	2k
<b>LED Status Indicator</b>	
Power Light	1 Red
Ethernet Port Light	Yellow indicates PoE, Green indicates Act
Surveillance Module Light	1 Green on indicates the Surveillance Module start
<b>Protection</b>	
Surge Protection	IEC61000-4-5 6k
ESD	1a Contact Discharge Level 2, 1b Air Discharge Level 2, Per : IEC61000-4-2
Pulse Group	IEC61000-4-4 Level 3
<b>Environmental</b>	
Working Temperature	-10°C~55°C
Storage Temperature	-40°C~75°C
Humidity (Non-condensing)	0~95%
<b>Mechanical</b>	
Material	Galvanized Sheet
Color	Black
Weight	315g
Dimension	135mm x 103mm x 27mm
<b>Stability</b>	
MTBF	>50,000h

Specifications are subject to change without notice.

## Configuration



# HAP-SW08

8 Port PoE Ethernet Switch



## Key Features

- One 100Mbps uplink ethernet port, eight 100Mbps downlink ethernet port
- All ports supports MDI/MDIX
- Meet IEEE802.3, IEEE802.3u, IEEE802.3af/at standards
- Excellent anti-thunder, anti-static and anti-interference ability
- Kensington Lock for anti-theft
- Support CCTV module that achieve VLAN, QoS priority for protect information security, prevent the viral transmission and ethernet attack

## Technical Specifications

Model	HAP-SW08
<b>Power</b>	
Power Supply	Power Adaptor
Voltage Range	48 ~ 57VDC
Consumption	<5W, PoE output<120W
<b>Ethernet</b>	
Ethernet Port	8 Ethernet Port : 10/100Mbps, Uplink Port : 10/100Mbps
Transmission Distance	Maximum 100m
<b>Network Switch</b>	
Ethernet Standard	IEEE802.3/802.3u/802.3x/802.1p/802.1q, IEEE802.3af/at
Backplane Bandwidth	1.8G
Packet Forwarding Rate	1.34Mbps
Packet Buffer	768k
MAC	2k
<b>Protection</b>	
Surge Protection	IEC61000-4-5 Level 2
ESD	1a Contact Discharge Level 2, 1b Air Discharge Level 2, Per : IEC61000-4-2
Pulse Group	IEC61000-4-4 Level 2
<b>Environmental</b>	
Working Temperature	-10°C~55°C
Storage Temperature	-40°C~75°C
Humidity (Non-condensing)	0~95%
<b>Mechanical</b>	
Material	Galvanized Sheet
Color	Black
Weight	500g
Dimension	200mm x 105mm x 27mm
<b>Stability</b>	
MTBF	≥50,000h

Specifications are subject to change without notice.

## Configuration

